

**BioPoly**

# Great Toe

Hemiarthroplasty Implant

Do you deal  
with Pain or  
Limited  
Movement in  
your toe?



Patient Information

# What are the alternative treatments?

- **Cheilectomy**

Shaving of bone spurs, may be performed at the same time as a BioPoly surgery.

- **Other Hemiarthroplasty**

Other implants use metal, and wear away cartilage on the opposite bone faster than BioPoly+.

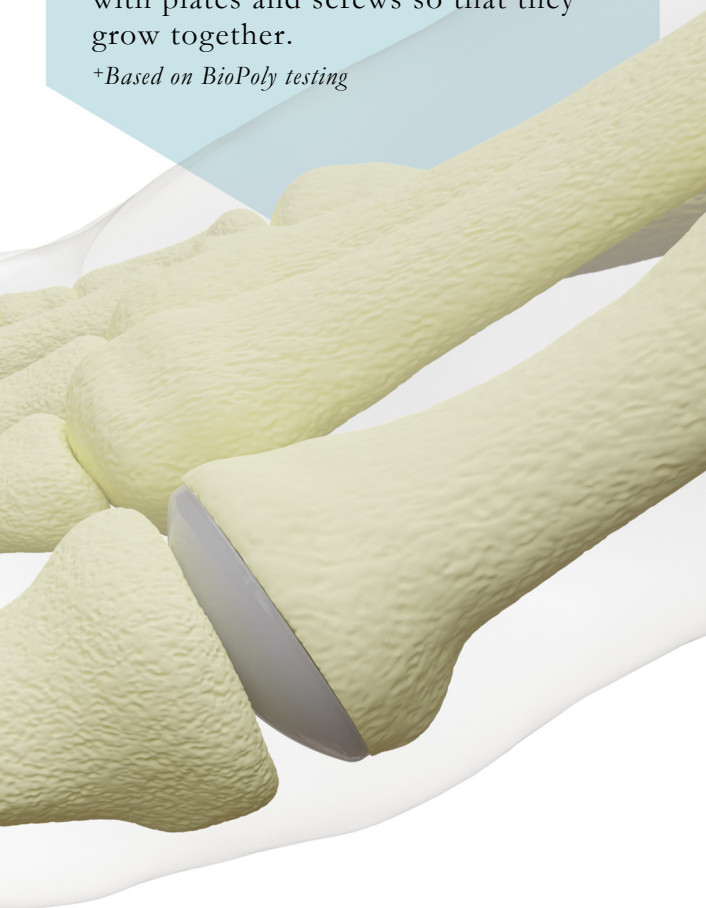
- **Total Toe Replacement**

Both sides of the toe joint are replaced.

- **Fusion**

The bones in the joint are held together with plates and screws so that they grow together.

*+Based on BioPoly testing*



## The BioPoly Great Toe can be used for:

- **Arthritis**

Is your Great Toe painful, stiff, swollen, clicking, and/or locking?

- **Hallux Rigidus/Limitus**

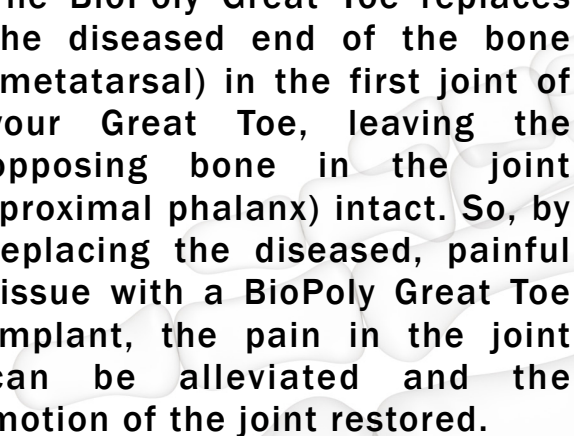
Is your Great Toe uncomfortable, swollen, and / or stiff?

- **Cartilage Defects in the Great Toe**

Does your Great Toe bone (metatarsal head) have a cartilage defect?

## How does the implant work?

The BioPoly Great Toe replaces the diseased end of the bone (metatarsal) in the first joint of your Great Toe, leaving the opposing bone in the joint (proximal phalanx) intact. So, by replacing the diseased, painful tissue with a BioPoly Great Toe Implant, the pain in the joint can be alleviated and the motion of the joint restored.



# What is the implant made of?

The BioPoly Great Toe contains a unique material (BioPoly) that combines a common plastic for implants (UHMWPE), with a lubricating molecule (Hyaluronic Acid) native to the joint. This allows the material to act like the cartilage it's replacing, rebuilding the joint surface. This material is molded onto a Titanium stem that provides support and helps fix the implant in bone.

## BioPoly

Slides against the cartilage on the opposite side of the joint

## Titanium

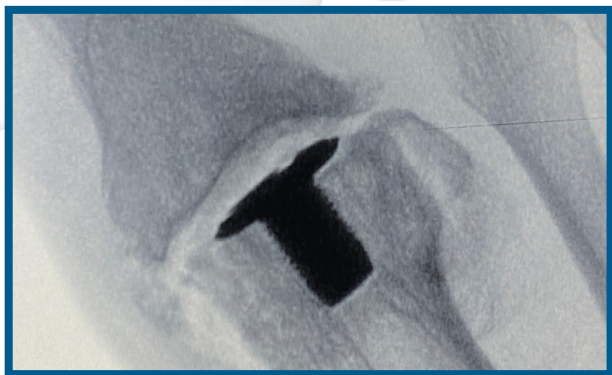
Attaches implant to the bone.

## What if the implant needs replaced later?

The BioPoly Great Toe only resurfaces the end of the metatarsal bone. It can be revised by total toe replacement or fusion.

## Are you a potential patient?

- Are you over 21 years old?
- Do you want to be able to bend your toe again?
- Do you want to wear your normal shoes/heels?
- Do you want to try to prevent a future total toe replacement/fusion?



X-Ray from actual BioPoly Patient.

**For more information:**

Visit: [www.biopolyortho.com](http://www.biopolyortho.com)



**Advancing Materials. Advancing Outcomes.™**

This product is covered by US Patent No. 7,662,954, and other patents pending. Copyright 2021 BioPoly LLC. All rights reserved. BioPoly® is a registered trademark of BioPoly LLC. Printed in the USA.



Manufactured By:

BioPoly LLC, a Schwartz Biomedical Company  
7136 Gettysburg Pike, Fort Wayne, IN 46804, USA  
Phone 260.999.6135 | [www.BioPolyortho.com](http://www.BioPolyortho.com)